

Parallel 2-Spindle CNC Lathe
2SP-150H



2SP-150H

Parallel 2-Spindle CNC Lathe

To a higher stage of accuracy and production

"High-production runs with no thermal deformation worries is a big relief."
It's happening now. High-volume manufacturing with superb quality.

- | | |
|---------------------------------------|-------------------------------------------|
| Top-of-the-class thermostability | Thermo-Friendly Concept |
| Line TACT ^{*1} times shorter | Quick 3-axis OGL ^{*2} (standard) |
| Smaller footprint | 12% less frontage ^{*3} |



Thermo-Friendly Concept

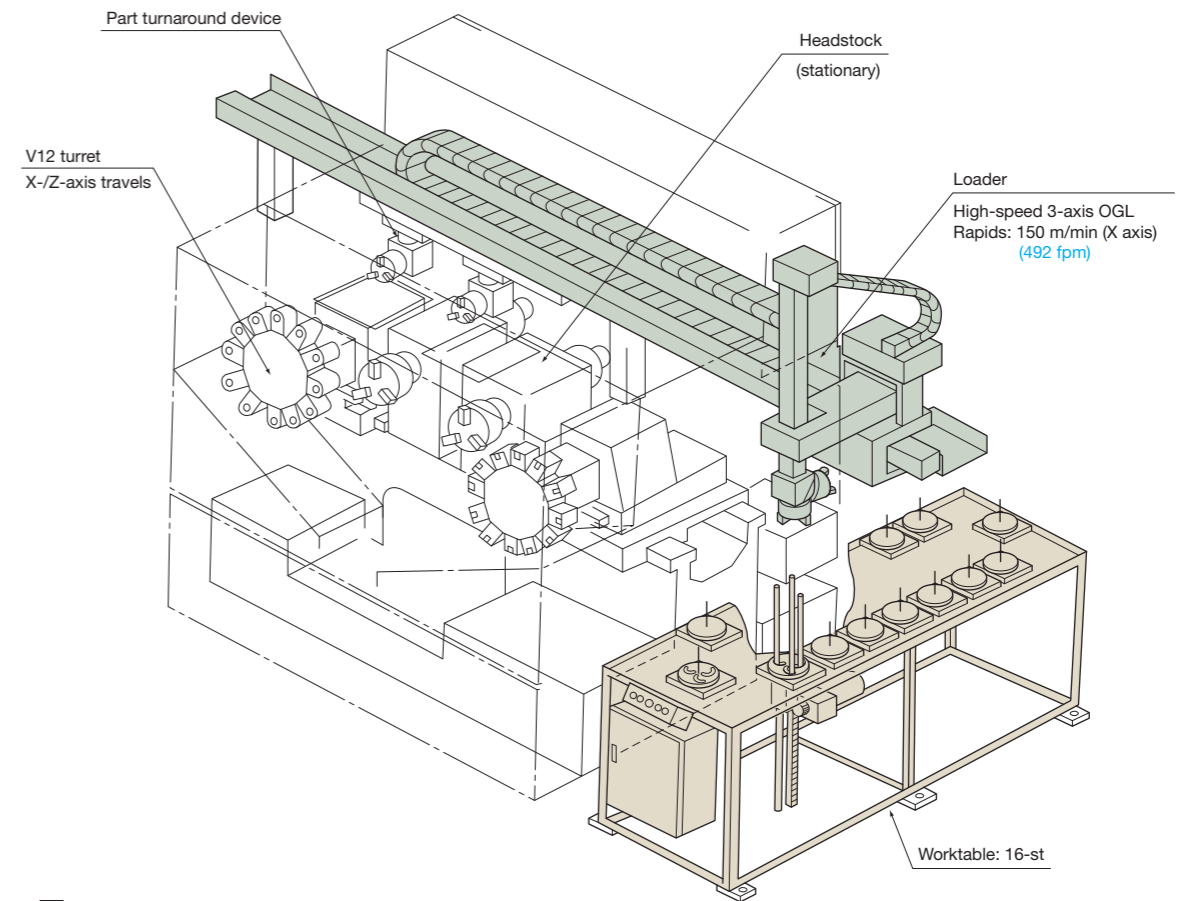


Machine Specifications

Capacity	Chuck size	6 in. [8 in.]	Turrets	Type	V12
	Max turning dia mm (in.)	ø150 <ø220> ^{*1} (ø5.91 <ø8.66>)		No. of tools	12
	Max turning length mm (in.)	80 <150> (3.15 <5.91>)		OD tool shank mm (in.)	□25 (1)
	No. controlled axes	4		ID tool shank mm (in.)	ø40 (ø1.57)
Travels	X axis mm (in.)	150 (5.91)	Rapids (X-Z)	mm/min (fpm)	24,000 (945)
	Z axis mm (in.)	155 (6.10)	Motors	Spindle (30 min/cont) kW (hp)	11/7.5 (15/10) x 2
Spindles	Speed range min ⁻¹ (rpm)	50 to 4,500 [6,000]		Saddle (X) kW (hp)	BL 2.5 (3.4) x 2
	No. of speed ranges min ⁻¹	Infinitely variable		Cross slide (Z) kW (hp)	BL 2.5 (3.4) x 2
	Nose	ø140 (ø5.51) flat	Machine size	Height ^{*2} mm (in.)	2,593 (102.09)
	Bore dia mm (in.)	ø42 (ø1.65)		Floor space ^{*3} mm (in.)	1,850 x 2,150 (72.83 x 84.65)
Bearing ID mm (in.)	ø80 (ø3.15)	Weight ^{*4} kg (lb)		5,000 (11,000)	

*1. < > : Machine capacity without loader application *2. With max loader height *3. Machine only *4. Loader included [] : Optional

Advanced Automation | High-Speed 3-Axis OGL Loader



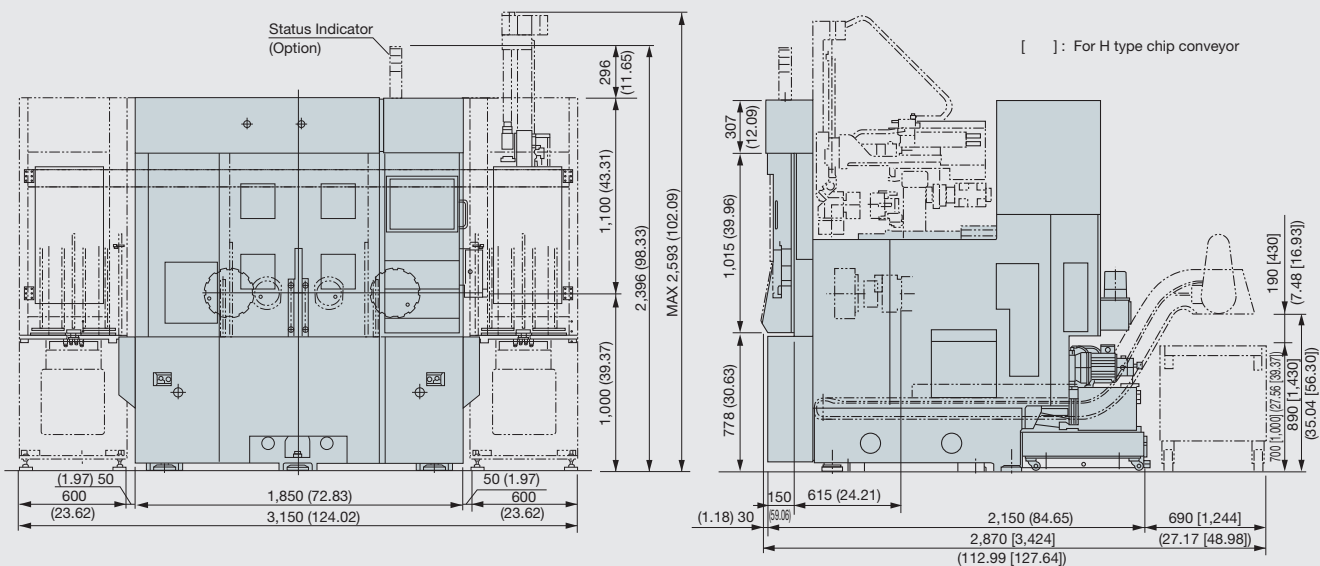
Loader Specifications

Loader (w/part turnaround device)	Max workpiece size mm (in.)	ø150 (5.91) x l80
	Max carrying load kg (lb)	3 (6.6) x 2
	Drive	3-axis servo (X-Y-Z)
	Working range mm (in.)	X: 2,558 (100.71) (beam over both ends), Y-Z: 500 x 210 (19.69 x 8.27)
	Rapid traverse (X-Y-Z) m/min (fpm)	150 x 120 x 55 (492 x 394 x 180)
	Hands* mm (in.)	3-jaw chuck; jaw stroke: ø30 (1.18)
Worktable	Max work dia mm (in.)	ø150 (5.91)
	No. pallets	16
	Lifter stroke mm (in.)	450 (17.72)
	Max work weight kg (lb)	30 (66)

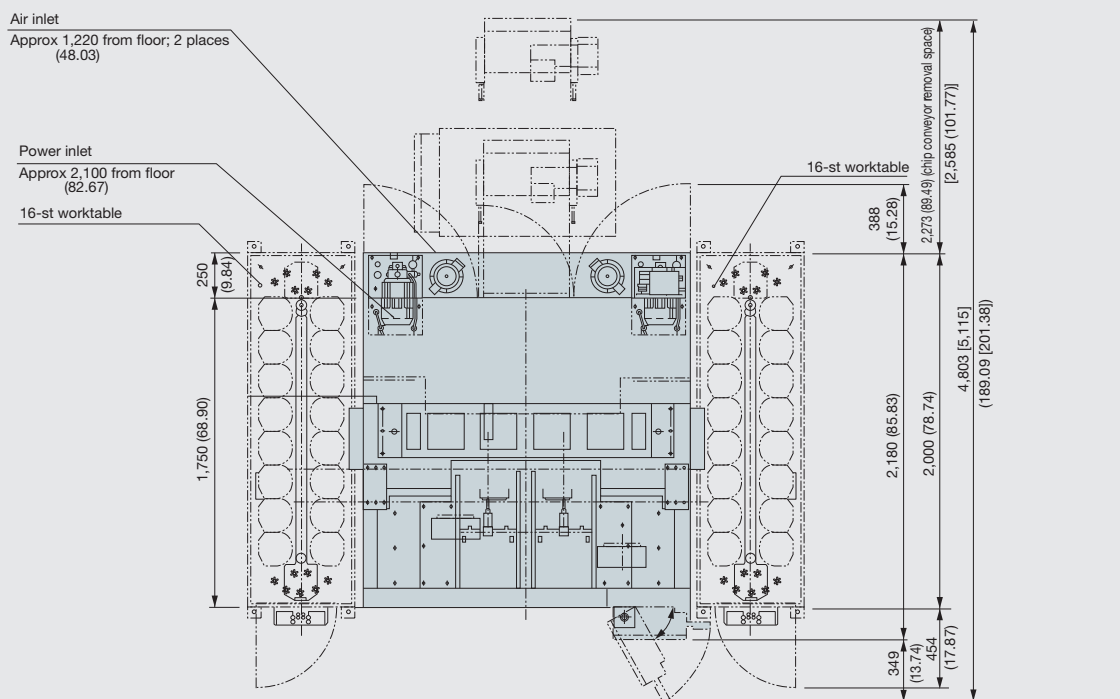
* With spring-loaded pushers

*1. Total Average Cycle Time *2. Overhead Gantry Loader *3. Compared to previous machine

Dimensional Drawing

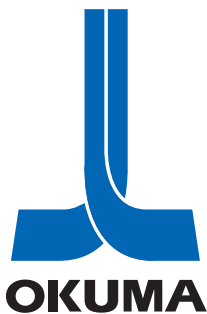


Installation Drawing



When using Okuma products, always read the safety precautions mentioned in the instruction manual and attached to the product.

• The specifications, illustrations, and descriptions in this brochure vary in different markets and are subject to change without notice.
 Ptd No. ZSP-150H-E-(8a)-100 (Oct 2013) Printed in Japan



This product is subject to the Japanese government Foreign Exchange and Foreign Trade Control Act with regard to security controlled items; whereby Okuma Corporation should be notified prior to its shipment to another country.